

## **Historic, Archive Document**

Do not assume content reflects current scientific knowledge, policies, or practices.





# HOFFMAN'S SEED WHEAT



HOFFMAN HOMESTEAD FARM

**A.H. HOFFMAN, INC.**

LANDISVILLE,  
LANCASTER CO. PENNA.

## **This Catalog**

appeals to that great middle class of farmers who are intelligent, progressive, up-to-date. The class that is farming for profit. Watchful of everything that will help grow bigger crops on their acres.

## **A List of the Best Winter Wheats**

is described and offered. Every type—smooth and bearded—early and late—stiff-strawed—hardy—strong—vigorous. Wheats that produce more grain per acre than the average sorts now planted.

## **Grown in the Lancaster County Valleys**

where wheats increase in productiveness. Thousands of acres have been grown with greatest care—for seed purposes—to be offered to you through this catalog.

## **The Most Modern Cleaning Equipment**

is employed. Cleaning and grading is accomplished to perfection. All stocks of seed wheat are free of rye—garlic—smut—cheat—cockle. The cleaning plant is of great capacity and the work is done with economy.

## **Prices of these Wheats are so Low**

that any farmer can invest in same. In fact, the cost is so little that few farmers can afford **not** to make the change. If you decide that it will pay you to invest in new seed wheat—

## **Don't Put It Off**

until 1923 or 1924 or later. If it pays to change at all—(and it certainly does pay) the sooner the change—the better it will pay. Don't wait.

## **Return of Seed Allowed—and Your Money Back—If You Want It**

That is—**If wheat** or anything we sell, **is not as nice as you expected—you can ship it back.** Four days are allowed after arrival at your station to look it over and start it back. We'll pay the freight. You be the judge—decide for yourself. If you prefer your money—return the seed, and we'll do the same with your money.

We will not be responsible in any way for seed or resultant crop after seed is planted. Too many conditions we can't control are involved after seed is sown.

**A. H. HOFFMAN, Inc.**



## *“Hoffman’s Wheats Pay!”*

**Why Sow Hoffman’s Seed?** The answer is given above—‘Hoffman’s Wheats Pay!’ Twenty-three years actual use in all winter wheat sections—and the ever-growing demand for them year after year—offers conclusive proof that Hoffman’s Wheats **do** pay!

Further evidence is set forth on the following pages—and the reader will not misplace his trust, by putting Hoffman’s Wheats to work for him this fall. Results will pay!

**The Best Variety?** Every kind offered has proven itself entitled to a place on this list. To shorten the list would be to omit something valuable. The right kind to sow depends on the desires of the reader and his location—and close reading of these pages should make it easy for him to make his selections.

**What Does It Cost To Change Seed?** Indeed so little that the matter of cost should scarcely be considered. An increase in yield of just one bushel to the acre, more than pays the cost of the new seed. Yes—that’s all! Read bottom of page 9 for full details. The statements there made are absolute facts—proven and attested to by wheat-growers of all sections. Even though your own wheat has been satisfactory, you may have a pleasant surprise with the better results you would get from these strictly clean and vigorous wheats here offered you.

### Hoffman's Wheats are Cleaned 'Clean'

There could be no cleaner Seed Wheat made. Every known principle in seed-cleaning machinery is used. Seven mammoth cleaners are required—each doing some particular kind of work not common to the others. There is absolute freedom from weed seeds in Hoffman's Seed Wheat—no cockle, rye, chess, garlic, smut, etc. Grading is done to the topmost degree. Germination tests insure soundest possible growth.

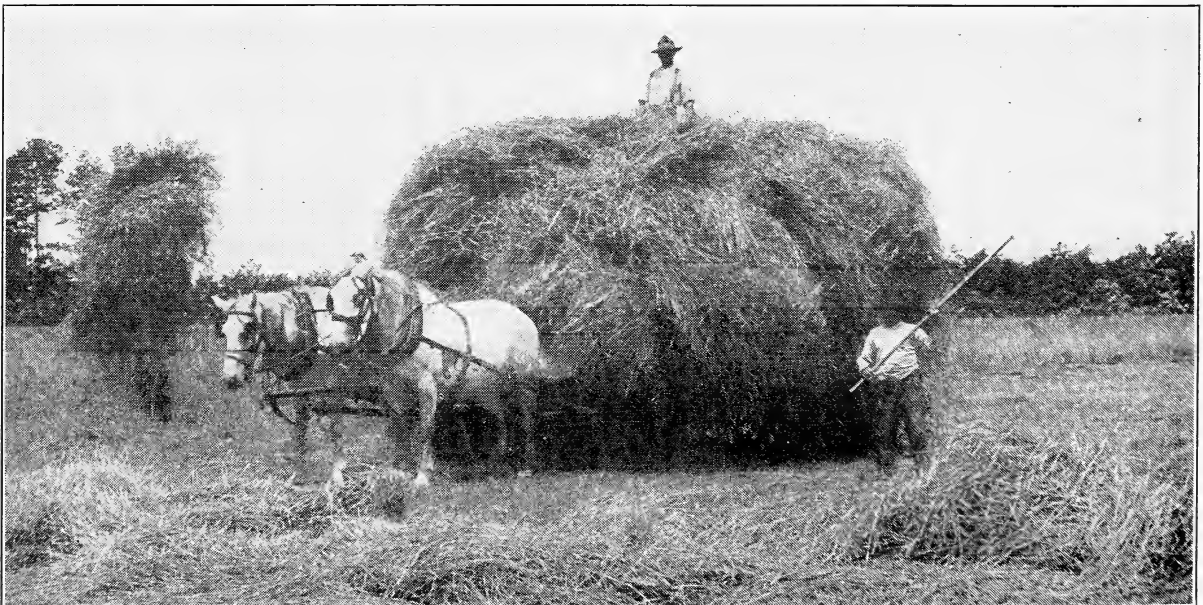
Back of this cleaning done in our warehouses, lies more of the story of the success of these wheats. Only clean stock-seed is used—and this is drilled on clean land by careful growers, who receive a premium for each bushel they so produce for us. When necessary, fields are hand-cleaned before harvest. Unusual care is taken while threshing. In truth, no trouble or expense is spared in having Hoffman's Seed Wheat just as near the mark of perfection as any wheat could be gotten.

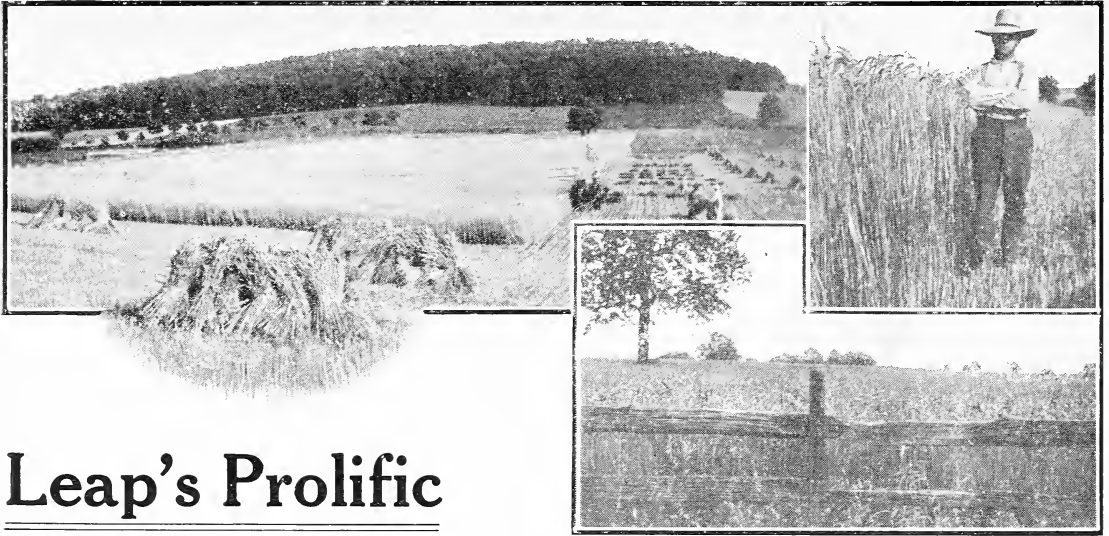
## TIMOTHY SEED

Before you decide the Seed Wheat question, let this page help you determine the kind of Timothy Seed you will sow this Fall. Just one grade is here offered—and it is the kind of Timothy Seed you should sow, because "Farmers Choice" brand represents the very best grade of seed to be had. It is the heaviest part of the best Timothy cleaned clean. Light-weight immature seeds have been removed by most modern cleaning methods. Tests for purity average 99.60 to 99.90 per cent. The very, very small portion of impurities does not consist of dangerous weeds, but of harmless fibre and other grass seeds, principally Clover and Alsike. Germination of "Farmers Choice" seed is always of the very best.

There is lower-priced seed to be had, but the farmer who desires clean seed of the highest germination, cannot find a competing brand at a lower price to give better satisfaction. Buy "Farmers Choice" seed this year—don't buy another kind, because it is lower in price. The difference cannot be great, and the small extra amount put into "Farmers Choice" seed will mean for you good, clean fields and better stands of grass. Remember—every bag must please you, or you needn't keep it.

Uses of Timothy need not be discussed here. All know the wide popularity Timothy shares among other grasses. Sown alone 6 to 8 quarts of seed are required per acre. When Clover is to be added in the Spring, only 4 to 6 quarts need be sown. Price—See Latest Price List.





# Leap’s Prolific

**Beardless. Chaff—white.  
Grain—hard, large, dark.  
Ripens—early.**

**Straw—long, stiff.  
Sow only 1½ bu. per acre.**

Our leading smooth-chaff variety appears first on the list. The reason for this could be best stated in these words—‘**There never was a better-liked wheat among so many farmers of so many different sections.**’ “Leap’s Prolific” has been with us since 1913, and each year since then has been making larger numbers of new friends throughout all winter wheat communities.

## Nine Good Crops in Nine Straight Years

That record proves the reliability of “Leap’s Prolific”—and can be more appreciated when you hear these figures. One of our growers during the past nine years, he has farmed “Leap’s Prolific,” has harvested as high as 45 bushels per acre, and **never had a crop of less than 32 bushels per acre.** Folks once buying “Leap’s Prolific” seed from us, stick to it year after year, because they realize

## Better Profits from Leap’s Prolific

Than from other wheats they used to grow. They now **get 5 to 10 bushels more grain per acre**—plenty of straw—and enjoy more of the desirable characteristic than are found in other wheats. Thus they come to realize the leadership of “Leap’s Prolific”—and of their own free-will often send us reports like this:

## 350 Bushels from 8 Acres

That is what a Monroe County, (N. Y.) customer reports from his “Leap’s Prolific.” An Erie County, (Penna.) man, 40 bushels from each acre. A northern Ohio report shows 44 bushels an acre. One from western Maryland, 38½ bushels per acre. Central New Jersey, a 38 bushel yield. From central Pennsylvania, two yields of 41 bushels each—another, 37—and another, 256 bushels from 6 acres. An Illinois crop showed 40 bushels to the acre. Many local results showed 36 to 39 bushel averages.

## Lancaster County Grown Seed Wheat

You cannot get wheat to sow from a better source than the fertile valleys of Lancaster County, Pennsylvania. Lancaster County grown seed wheat possesses a degree of vitality that insures a strong, vigorous growth wherever it is taken to be planted. Lancaster County grown wheats are now sown with success in every winter wheat growing state. It has been found very profitable to introduce Lancaster wheat for seed purposes in Northern as well as Southern and Western locations. Successful wheat growers are buying wheat from Lancaster County year after year—even though no change in variety is desired, and they get substantial benefit in the form of increased crops.

### **"Leap's Prolific" No Experiment**

It has passed the experimental stage—is now firmly established as a profitable wheat to sow. Don't be misled this year into buying seed of uncertain value—a wheat for which much is claimed, but that maybe won't materialize. Be sure of your success—for it will pay any reader to put his faith and money too, into our "Leap's Prolific" seed. Nine years steady satisfaction among its users in all sections has proven "Leap's Prolific" a profitable wheat to grow.

### **A Good Stooler—Less Seed Required**

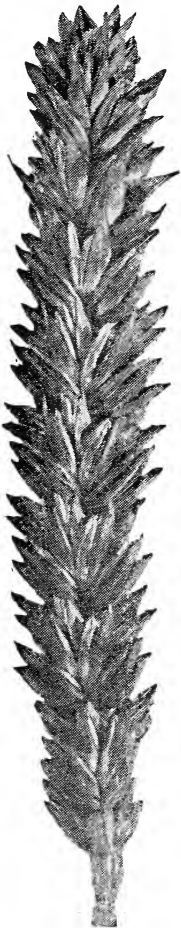
"Leap's Prolific" need not be seeded heavily.  $1\frac{1}{2}$  bushels per acre is sufficient. Don't sow more—even though you find it necessary to sow 2 bushels of your other wheat. The "Leap's Prolific" seed here offered you—grown on Lancaster County's fertile soils—severely tested by extremes of weather—put through our thorough cleaning plant—graded to perfection, will stool out strongly, root deeply, and produce a good bunch of stalks from each grain.

### **Long and Very Stiff Straw**

The straw of "Leap's Prolific" is longer than the average of smooth-chaff wheats. Thick-walled and well able to nicely bear full crops of grain. Where soil is rich and a stiff-strawed wheat is required "Leap's Prolific" answers very nicely. The root-growth is extraordinary. Large spread—long depth. These traits no doubt account for its ability to withstand disease, insects and bad weather conditions, to which many ordinary wheats succumb. While no wheats are rust-proof or fly-proof, we know "Leap's Prolific" resists the ravages of both fly and rust more than other wheats that have come to our notice.

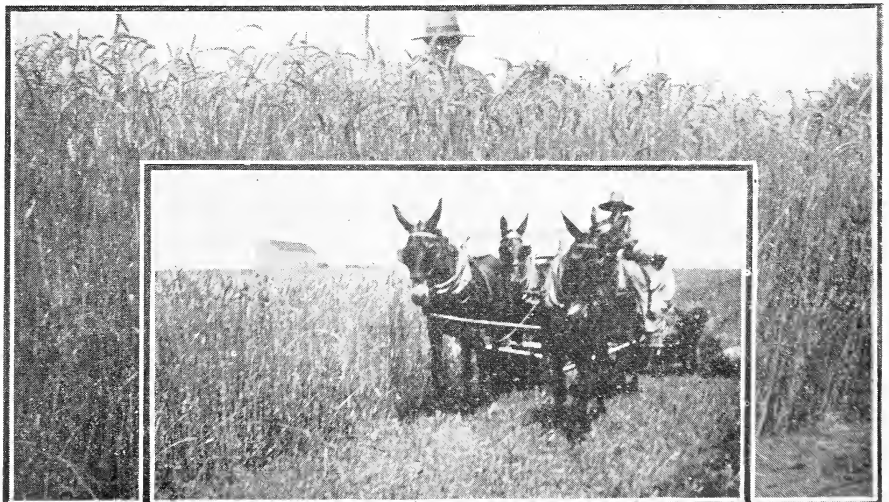
### **Large, Hard Grain—Does Not Shell Out**

"Leap's Prolific" does not have the faults often found in other heavy yielding wheats. Such wheats are often apt to be small in the grain, weak in color, and soft. In this, "Leap's Prolific" is an exception, for it is of the old longberry type; the grain having length—good size—desirable dark color—the very best of milling qualities. The heads are large, the chaff is a beautiful white. The glumes are close together on the head, and so well closed that the wheat does not shatter or shell out in handling.



Head of  
"Leap's Prolific"

**VERY IMPORTANT:—At all prices Bags are Free and we pay the freight as explained on last page. Don't forget these offers as they mean much to you.**







Photos showing two Lancaster Co. fields of “Leap’s Prolific” that made respective yields of 40 and 37 bu. per acre.

### **Vigorous Grower—Hardy—Matures Early**

Lancaster County has seasons that make hardy Seed Wheat. The winters are changeable. There will be extreme cold spells—again, several days of warm thaws. Sometimes wheat-fields are snow-covered, oftentimes, not so. Yet for nine straight winters—some of them severe ones, “Leap’s Prolific” has come through every time in A-No. 1 shape. Sometimes alongside of other varieties badly damaged. “Leap’s Prolific” is one of the earliest wheats to ripen—one of the first ready to be harvested.

### **The Right Soils for Leap’s Prolific?**

Success with this wheat does not seem to depend much on the soil—for very careful search has shown “Leap’s Prolific” equally adapted to Highland, Lowland, Limestone, Gravel, Clay or Slate ground. You don’t need extra rich soil. It does well there, of course. But has been doing extremely well on even thin to average land. We have never found another wheat with such a wide range of value in this respect.

### **An All Round Great Variety**

Nine years use in a wide territory has not revealed any serious faults in “Leap’s Prolific.” It has proven its merit in regard to yield—of both grain and straw. Stands up extremely well because of its stiff straw. Stools out extra well. Is economical regarding seed required. Produces a good, hard grain with the best of milling qualities. Doesn’t lose its grain when harvested. Very hardy, and suited for growth most anywhere—and ripens on time. Certainly all of these desirable traits must justify the claim made for “Leap’s Prolific” as a leader among winter wheats.

—“LEAP’S PROLIFIC”—Continued next page

### **Pure Wheat**

The purity of our seed is a matter of the greatest concern to us. We take every precaution possible to grow pure wheat and to prevent mixing after it is grown. We frequently get stock seed by selecting heads in the sheaf. We sow in fields where there is no volunteer wheat of another variety. The greatest care in threshing, cleaning and grading is required. With all these safeguards we do not claim our wheat to be pure to the last grain, but we believe our stock to be nearer to perfection in this regard than any other that can be had.

**Poultrymen—Read Page 12.** It offers you excellent feed at an attractive price. Order your supply early. Demand is always heavy. Poultry raisers realize the extra value of this feed.



### **The Cost of New "Leap's Prolific" Seed**

Is surprisingly small. If you have saved two bushels of your own wheat for each acre—sell it to your mill. With the money you get, buy our "Leap's Prolific" seed at the rate of 1½ bushels per acre. Yes—that's enough, positively! And the extra cost won't mean more than a few cents per acre. Only one bushel more wheat per acre pays everything. But you will likely have 5 bushels more, maybe 10 bushels. Some have had 15 bushels per acre gains from our "Leap's Prolific" Seed.

### **If You Already Have "Leap's Prolific"**

It will pay you to again renew your seed. Many folks buy new seed from us each year, even though they keep the same variety. It pays them to do it. The extra vigor that goes along with our product, shows them still an extra profit. Seed of such character from these favored wheat soils, possesses a degree of strength unmatched by that from any other section—and this quality very plainly shows itself in the crop it produces.

### **Make the Most of Your Wheat Crop**

Be sure of the right start. Proper culture of your seed-bed, the right fertilizer, etc., are important. But choose the best seed you can get. This "Leap's Prolific" seed here offered you—grown and cleaned as it is—is bound to please. It is a pleasure to grow it, and harvest it—and best of all, has been showing the kind of returns in dollars and cents that you are seeking for. There is business back of "Leap's Prolific." See List.

### **Why Do Customers Write Like This?**

**The only answer is—Hoffman's Wheats Pay! Read what they say:**

**Ulster County, N. Y.:** "It may interest you to know that we planted 10 acres of wheat last fall. By error we ordered just enough of your Leap's Prolific seed for 7 acres. We bought sufficient to plant the other 3 acres from a nearby source. We can go out in the field and tell at a glance where your wheat ends and where the other starts. The line is almost dramatic. All of the percentage in favor of your seed. My farmer insists on your seeds."

**Franklin County, Pa.:** "The 34 bushels Leap's Prolific bought from you done fine—I had a larger yield than any of my neighbors and such a fine lot of straw."

**Upshur Co., West Va.:** "I just want to say I never saw such nice wheat in my life (Leap's Prolific). My neighbors all say it's the nicest wheat they ever saw. I am surely glad I ordered my seed wheat from you instead of planting cull seed that I could get around here at a higher price than I paid for your seed."

Scores of other splendid reports are on file—all of them proving our claim of leadership for this strain of Leap's Prolific wheat here offered you.

### **PREPARATION OF SOIL**

This matter is important. If soil is not thoroughly worked best results cannot be secured even if best seed is sown and abundant fertilizer applied. The ground should be plowed and thoroughly pulverized. The soil should then be compacted—a condition best brought about by rolling. This will press out the air spaces underneath where seed is to be deposited. When wheat stubble or sod must be plowed—the plowing should be done early so that the benefit of rains may be had to settle same before soil is finally prepared for seeding. Tillage cannot well be overdone. All clods should be broken up. The first tender roots of the wheat plant cannot do well among clods and when they must subsist under such surroundings a slender wheat plant is started.

## Pennsylvania 44

**Bearded. White Chaff.**  
**Grain—large, red.**  
**Straw—Good even lengths, stiff.**  
**Sow—1 $\frac{3}{4}$  bushels per acre.**

Pennsylvania 44 is a bearded wheat, appearing on our list for the first time. It is a white-chaff wheat, with purple straw. Is the result of a selection from the old Fulcaster wheat. Was originated at the Pennsylvania State College Experiment Station several years ago. The grain is medium to large. Straw grows long and of satisfactory stiffness. The variety has shown to be a good yielder. No local crops of this wheat are harvested as this page is written, but the outlook is promising. Results on experimental plots have shown Pennsylvania 44 yielding four to five bushels more per acre than other bearded wheats grown alongside. Actual field tests of the next few years will no doubt better acquaint wheat-growers with the full merits of the variety.

Stocks of this variety are small—and instant orders are urged. We suggest that folks ordering Pennsylvania 44 name a second choice—either Stoner's Miracle, Lancaster Fulcaster, Golden Wave or Red Rock (all very good bearded wheats)—so that shipment will not be delayed, should we be sold out when order arrives. See Price List.

## Red Rock

**Bearded. Chaff—red**  
**Berry—large, red, hard.**  
**Straw—tall, stiff, uniform. Ripens—early.**  
**Sow 1 $\frac{1}{2}$  to 1 $\frac{3}{4}$  bushels per acre.**

Red Rock is another bearded wheat—was originated by the Michigan Department of Agriculture. Besides its wide use in that State, Red Rock has now become well and favorably known throughout many other sections to the East and South.

The 1922 crop is the fifth one of this variety grown hereabouts, and each year's turnout has been very satisfactory. Red Rock is a good yielder. Grows a good, tall, stiff straw. Heads do not grow quite as long as those of some other wheats, but the extra stooling properties of this variety easily make up for this shortage. It stools out very well. Grain is large—very hard, and extra long type—dark red. Much more could be quoted on the merits of this variety—but a summing up of its good qualities (and indeed we have noticed no faults in it) would be that Red Rock is a good, hardy, heavy-yielding wheat, destined for much wider use. And anyone liking a bearded variety will be pleased with a trial of Red Rock. See Price List.

### Farmers Sowing Their Own Seed

whether it's wheat, corn, oats, grass seeds, etc., should have a "**Clipper**" Seed Cleaner. It will pay for itself in a short time. Besides being the best farm mill, the "Clipper" is inexpensive—and no farmer can afford not to have one of them.

### You Will Be Pleased

with any investment you make in Hoffman's Graded Winter Wheats. They are right. Closely graded—cleaned—sound. There is no more favorable time for you to change to Hoffman's Wheats than right now!



# Stoner's Miracle

**Bearded.**

**Chaff—white.**

**Grain—large, plump, dark red,  
hard, longberry type.**

**Ripens—early.**

**Straw—long, stiff.**

**Sow  $1\frac{1}{4}$  to  $1\frac{1}{2}$  bushels per acre.**

Stoner's Miracle is a very worthy variety of bearded wheat. In it are combined all of the characteristics that go to make a safe and dependable kind to sow. It has at once the advantages of heavy yield—stiff, long straw—fine, hard, red grains—disease resisting qualities, great stooling ability—and at the same time is free from serious faults.

It is unfortunate that when this wheat was first introduced, certain seed houses who put it upon the market, advocated its seeding at the rate of as little as a peck to the acre and at the same time charged an exorbitant price for the seed. The wheat did its part all the time—yet it could not succeed when given such poor starts. Experiments conducted through later years have disclosed that "Stoner's Miracle" when seeded at nearly as heavy a rate as other wheats has proven to be a splendid variety. By our seedings here on these famous Lancaster County Wheat soils, it has been greatly improved—and it now occupies a fixed place upon many of the Country's best farms from which it cannot be dislodged. When seed of Stoner's Miracle is taken from this favored section into others, results are more than pleasing to its users.

## Large—Hard—Beautiful Berry

In this one respect alone, "Stoner's Miracle" has much to commend itself to farmers who take pleasure in viewing plump, large-grained wheat in their granaries. We do not offer another variety that is prettier in this respect. The grain fills out well—is large—very plump—rich in color—hard in texture—and its milling qualities are of the very best.

## Heavy Stooler—Long, Stiff Straw

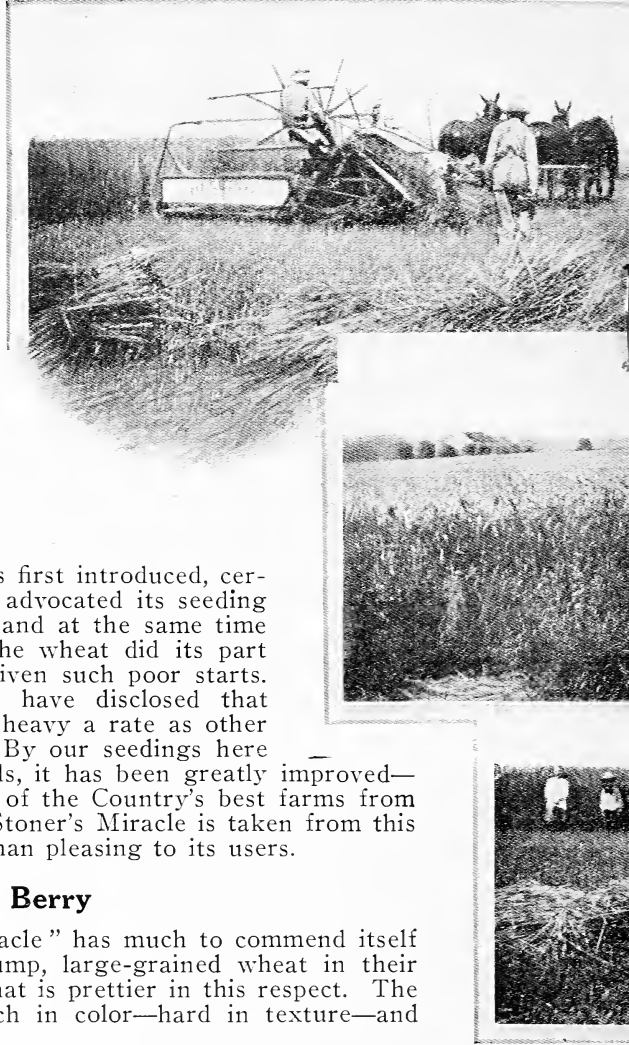
"Stoner's Miracle" is an exceptional stooler. But we urge that sufficient seed be sown. Don't sow as little as a peck or a half bushel. Results won't work out satisfactory. Don't sow less than a bushel—but to provide for seasons of adversity, better sow  $1\frac{1}{4}$  to  $1\frac{1}{2}$  bushels to each acre. This is plenty. Don't sow more than  $1\frac{1}{2}$  bushels—heavier than this seeding is simply a waste of seed—and at the same time, hinders the seed from giving you its best results. Because of the great stooling habit of this wheat, it should be given a chance to do its best in this regard.

## Hardy and Healthy

Here in Lancaster County and in the various sections where we have sold this variety, it has proven its exceptional hardiness. Where exposed to a succession of frosts and thaws, "Stoner's Miracle" showed to advantage by resisting damage of all kinds. We do not claim any wheat either rust-proof or fly-proof. Such wheats do not exist, despite some advertising you see, but some strong vigorous sorts of wheat resist attacks of fly and rust better than others. "Stoner's Miracle" has remained especially free from attacks of both fly and rust, when other varieties under similar attacks have been badly damaged.

## Yields Heavily—of Grain and Straw

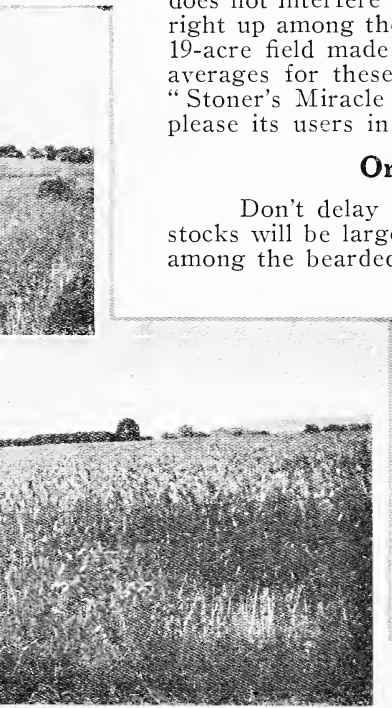
For stock-feeders requiring an abundance of straw, "Stoner's Miracle" would be a good selection. Its superior stooling properties, and the unusual length to which its straw grows make it a favorite variety to such persons. But its super-production of straw



does not interfere with the grain crop to be realized from this variety. It stands right up among the leaders when heavy yields of grain are being reported. One 19-acre field made 726 bushels—and a 24-acre growth yielded 950 bushels. The averages for these two crops being approximately 38 and 40 bushels per acre. “Stoner’s Miracle” is an excellent producer, both of straw and grain, and will please its users in both of these respects.

**Order “Stoner’s Miracle” Early**

Don’t delay ordering after you have decided on “Stoner’s Miracle.” Our stocks will be large, but so will be the demand. “Stoner’s Miracle” is a leader among the bearded wheats, has proven its ability as a variety giving very satisfactory crops of grain and straw—grain of extra quality, and good, stiff, long straw—is a hardy and dependable kind to sow. You will be pleased with results if you decide upon this variety. See Price List.



**The Sowing of Plump Seed**

of a hardy, vigorous, prolific variety is one of the conditions necessary to produce abundant wheat crops.

**With Good Seed 35 Bushels**

wheat per acre can be grown as easily as 25 bushels with common seed.

**Did It Pay Them?**

An Erie Co., (Pa.) customer wrote: “Just finished threshing your Leap’s Prolific wheat—averaged 40 bushels per acre.”

New York State customer: “I have grown Leap’s Prolific for three years—this year I threshed 350 bushels from 8 acres.”

Always keep in mind our “Bags Free” and “Freight Paid” Offers. They mean much when you compare our prices.

**An Investment in Hoffman’s Seed Wheat**

Is about the surest thing going for the farmer whose wheat is unfit to sow (and it is a fact that many folks do not realize the poor condition of the wheat they have been using). For instance:

Cost of changing seed for 20 acres—50c. to \$1.00 per acre (take the highest figures) .....	\$20.00
Improved seed would easily mean 5 to 10 bushels increase per acre (say 5 bushels per acre). Increase therefore.....	100 bushels
Probable value 100 bushels increase.....	\$100.00
Extra cost to you of this increase.....	20.00
<b>Your Extra Profit .....</b>	<b>\$ 80.00</b>

The above are not simply fanciful ideas or figures—but actual facts, that have time and again been proven by many hundreds of our customers. What Hoffman’s Seed Wheat has done for them it will do for you. We urge a change to it this year—it’s going to pay! Order your seed early.

**THE TOP BUSHELS ARE PROFIT!**



## Lancaster Fulcaster

Bearded. Chaff—white.  
Grain—hard, large, dark red.  
Straw—stiff, long. Ripens early.  
Sow  $1\frac{3}{4}$  bushels per acre.

Lancaster Fulcaster is rightly one of the most popular bearded wheats. It is a variety that, under our care and supervision, was improved by years of selection from the old Fulcaster. It is

### **A Reliable Yielder Year After Year**

This is a great point in favor of Lancaster Fulcaster. In years when all conditions were against successful crops, this variety has proven its reliability by making good average yields in spite of adverse conditions.

### **Does Well on Both Rich and Thin Soils**

There are very few other sorts that will equal Lancaster Fulcaster on soils that are of just average fertility. Farmers who are not able to raise even fair crops on thin soil, should substitute Lancaster Fulcaster. The change will insure them against wheat failures. Under such conditions, Lancaster Fulcaster will produce a satisfactory crop of straw and a surprising amount of grain. The grain will be the finest quality, a genuine longberry, dark red and hard. A peculiarity of this variety is that even on thin soils the grain will be full size. Cleaned Lancaster Fulcaster Seed Wheat weighs 62 to 63 pounds per measured bushel, and there is no wheat liked better by millers. Here on our rich Lancaster County soils Lancaster Fulcaster is a great favorite—this wheat comes through satisfactorily wherever sown, no matter what the quality of the soil.

If the wheat growers of the United States, who are now growing as little as 15 to 18 bushels of wheat per acre, could be persuaded to change from their own wheats to Lancaster Fulcaster, there would be such an increase of grain that the average yield of the country would be increased by a hundred million bushels.

The straw of Lancaster Fulcaster is of very satisfactory strength; stands up well; bears a good-sized head of heavy grain; stools out well; ripens early. This is a high-bred wheat, suitable for use by the farmer who gives intense cultivation and liberal fertilization, as well as for the grower whose farming is necessarily rough and on soils where fertility is limited. The stocks of Lancaster Fulcaster we have for disposal cannot be matched for perfection of grain at any price, and the reader will not be disappointed with any investment he makes in this wheat. See Price List.

In the Pennsylvania State College Experiment Station 4-year test of 17 varieties, Fulcaster led all the bearded wheats, yielding 33.8 bushels per acre for the 4 years. In a 19-year test at the same station, of 5 varieties, Fulcaster led and averaged for the 19 years 31.7 bushels per acre—more than double the average wheat yield of the United States. Tennessee University secured a yield of 41.66 bushels per acre—Kentucky State College Station, 45.2 bushels per acre.



# Pennsylvania Blue Stem

**Beardless. Chaff—red.**  
**Grain—hard, medium size, dark red.**  
**Straw—stiff and long. Ripens early.**  
**Sow  $1\frac{3}{4}$  bushels per acre.**

“ Pennsylvania Blue Stem ” continues to be a favorite in many sections. It is a strong, vigorous grower—very hardy, and withstands very well the winters to the far north. Is a heavy yielder under favorable conditions, and at the same time one of the best and most reliable yielders under unfavorable conditions.

It has been noticed that “ Pennsylvania Blue Stem ” is a variety that comes as nearly fly-proof and drought-proof as do any other wheats known. Seems to possess unusual ability in this respect. A ripened field of “ Pennsylvania Blue Stem ” is a very pleasing sight. Stands up tall and very erect. The heads fill nicely. The thick brown chaff covers the grain well, and thus does away with the shelling-out nuisance and subsequent loss thereby.

“ Pennsylvania Blue Stem ” is an exceptional stoolet. Because of this it does not represent a big investment to change to this variety.  $1\frac{3}{4}$  bushels is ample heavy seeding. Some of our very best yields locally have been made where only  $1\frac{1}{4}$  bushels were sown. Year after year growers of “ Pennsylvania Blue Stem ” continue to report yields well among the best of the community—it is surely reliable in this respect. The berry of “ Pennsylvania Blue Stem ” is of good, medium size, very plump, hard, light red in color, and much desired by millers.

Taking all together, “ Pennsylvania Blue Stem ” has made a very enviable record for itself in regard to good yields and desirable characteristics, and will continue among the leaders of the smooth-headed wheats. See Price List.



# Golden Wave

**Bearded. Chaff—amber brown.**  
**Berry—plump, red, medium to large.**  
**Straw—tall, very stiff, even.**  
**Ripens—early. Sow  $1\frac{3}{4}$  bushels per acre.**

If you prefer a bearded wheat, and probably haven't yet found a variety stiff enough in the straw to answer your requirements—then you should give trial to “ Golden Wave. ” It is one of the leading wheats in many sections where soils average rich—because of its ability to stand up well and at the same time, produce a reliable crop of grain.

“ Golden Wave ” is one of the banner yielders. Mr. S. Mumma, one of our growers, has averaged 35 bushels per acre over a six year period. One year his 30-acre field made him 1,200 bushels threshed wheat—exactly 40 bushels to the acre.

There are some soils upon which bearded wheats out-yield smooth chaff varieties. Some of these soils are so fertile that a bearded variety of extraordinary strength of straw is required. It is in this point that the “ Golden Wave ” has the better of most other bearded wheats that have come under our observation. “ Golden Wave ” stands up to allow very good work with the binder. There is not a fault to be found with “ Golden Wave ” unless it is a fault to grow bearded.

“ GOLDEN WAVE ”—Continued next page

—GOLDEN WAVE—Continued from page 11.

**A Heavy Yielder—Both Grain and Straw**

Has no preference as to kind of soil—will respond nicely wherever sown. Does especially well on rich land, but gives a very good account of itself on land that is of poor average fertility. Straw grows long. Grain is hard, dark red, and of good size—very desirable for milling.

Indeed this wheat is one that will please the farmer desiring to grow a bearded variety—a kind that will prove a profitable investment for any wheat grower. See List.

## Four-Rowed Fultz

**Beardless. Chaff—white.****Grain—very plump, medium size, hard, red.****Straw—medium to long, very stiff.****Ripens—extremely early. Sow  $1\frac{1}{2}$  bushels per acre.**

This is one of the earliest wheats—grows a very stiff straw. Where soils are rich, and other wheats lodge badly, "Four Rowed Fultz" will stand up nicely. It is an unusually hardy wheat. Has been hereabouts for thirteen years and each harvest its yields have been among the leaders. Grain is not as large as some other wheats, but very plump, and of first-grade milling quality. Heads are not long (see picture) but very compactly built—spikelets set close to the stem, often four kernels in a row on each side. There are better varieties for poor soils than is Four Rowed Fultz, but if your soil is average to rich, this would be a good selection. It is a hardy wheat—ripens a few days ahead of most other wheats—and gives a very satisfactory crop of both grain and straw. See Price List.



Head of  
Four-Rowed Fultz

## Red Wave

**Beardless. Chaff—red.****Grain—large, long, hard, dark red.****Straw—long, thick-walled.****Ripens—mid-season.****Sow  $1\frac{1}{2}$  to  $1\frac{3}{4}$  bushels per acre.**

"Red Wave" is a very popular wheat in many sections. It was originated by Mr. A. N. Jones, famous wheat-breeder of New York State. While "Red Wave" will give a good account of itself most anywhere, we have noticed it to be especially suitable for use in sandy or gravel situations. "Red Wave" is a smooth-head type. Grows very tall, stiff straw that does not lodge easily. Heads grow to unusual length—indeed the longest heads we know of. They fill out nicely. Grains are of good size, plump—hard and of good milling quality. "Red Wave" has proven a very profitable wheat on many hundreds of farms we have supplied with this seed. See Price List.

## High-Grade "Chicken Wheat"

On account of the close cleaning and grading of our wheats for seed, we receive from our cleaners large quantities of wheat which are of good sound quality. This is put up in 100-lb. bags and sold for chicken wheat. This is a valuable feed. No other grain fed by itself is quite as suitable for chicken feed. There is much plump wheat in this stock and nothing obnoxious.

This wheat is much better than that sold by millers and grain dealers, for our grading is very much more severe than the grading these folks do. Our wheats are in the first place, much cleaner and more free from weeds and foreign matter.

Poultrymen, either large or small, will be pleased with a trial order. We can handle your 100-lb. orders (or ton orders) quickly. FREIGHT PAID OFFERS made in connection with all our seed quotations DO NOT APPLY to Chicken Wheat. Bags are free. See Price List.





## ALFALFA SEED

The right kind of seed has much to do toward a successful stand of Alfalfa. Surely there are other important details that dare not be overlooked. Among these: sufficient lime, careful preparation of seed-bed, proper drainage, inoculation of seed. Seed from the far north has proven best for the sections we serve. This season's supply averages of very good quality—thoroughly cleaned—sound in growth, and is highly recommended as such strains of Alfalfa seed as will insure successful stands for their users.

**FREE BOOKLET—"How to Grow Alfalfa"**—contains detailed instructions, and many interesting facts about Alfalfa. Ask for it.

**"Northwest" Brand Alfalfa Seed** is the cleanest, brightest, strongest seed from non-irrigated fields in the far Northwest. This includes the districts adjacent to the North Rockies and Black Hills, the most Northern Sections where Alfalfa Seed can be matured. Very little of the seed reaches the Eastern markets. "North-West" Alfalfa possesses vigor and hardiness unequalled by seed grown elsewhere. Only a strong, vigorous strain can endure the climatic conditions of the Northland. Feeble plants can't live there. Therefore, the seed matured is only from strong plants of the most hardy types. Most of the quality of seed from this section fit for our North-West brand is eagerly purchased for reseeding right in the States where it is produced. Our stocks were procured with the greatest difficulty and at prices that forbid the possibility of selling as low as the common Alfalfa in the market. However, the price this year is on a reasonable basis—one that figures to a very low cost per acre considering the number of years a patch of North-West Alfalfa will doubtless last for you.

Stock of the strain are limited, and our customers are advised to order this brand long in advance of seed time.

**Hoffman's "Extra" Alfalfa.** Hoffman's "Extra" Alfalfa is not a second grade by any means. It represents the very highest possible degree of purity, as well as germination. Beautiful as to color. It is Northern grown, American, unirrigated seed. Not grown as far North as our "North-West" brand but in a latitude that makes it suitable for culture all over the Middle Atlantic States. Hoffman's "Extra" is a grade that very rarely finds its way in Eastern Seed Stores. We have sold Hoffman's "Extra" Alfalfa for years in the districts served by us and it has given complete satisfaction. It will compare favorably with any competing brand in the market, both in purity and growth. In vigor and hardiness it is second only to our "North-West." See Price List.

**Grimm Alfalfa.** Stocks also include the Grimm Alfalfa seed. This strain produces the crown-type of root system—rather than the tap roots common to other alfalfas. Our supply is from the northwest—and secured from parties holding growers affidavit as to its genuineness. Supply is limited and early orders are urged. See Price List.

**It pays well and is an insurance against failure to inoculate Alfalfa Seed.** We believe the most highly bred cultures on the market are sold under the commercial name of "Farmogerm." There is other inoculation to be had much lower in price, but we advise the use of "Farmogerm." We sell it. See description and prices on page 15.

# SEEDS FOR SUMMER SOWING

(Consult Price List for Quotations)

**Sweet Clover** (*Melilotus Alba*-White Blossom.) A legume plant that does not require rich soil—a biennial. Valuable for pasturing and hay. For hay must be cut before fully ripe—will grow  $\frac{1}{2}$  to 6 feet tall. Is easily started on land that contains lime. Seed should be inoculated. (See "Farmogerm" page 15.) Sow Spring or Fall. Use 20 lbs. hulled seed per acre.

**Crimson Clover** is one of the legumes largely grown for soil improvement. Should be sown early in the Fall to make a cover crop and green manure to turn under the following May or June. May be seeded in corn fields at last cultivation or by itself in July or August following some summer crop. Sow about one peck per acre.

**Red Clover, Alsike Clover, Mammoth Clover**, these three Clovers need no description here—their uses and benefits for haying and soil improvement cannot be over-estimated. Our stocks of all these seeds represent choicest qualities—cleaned clean—of highest germination.

**Economical Mixture** is made of approximately  $\frac{1}{2}$  red clover,  $\frac{1}{4}$  alsike and  $\frac{1}{4}$  timothy. A valuable combination for many purposes—economical in price. Free of dangerous weed seeds.

**Hoffman's Lawn Grass.** You will get the best possible results with this Lawn Mixture. It is composed of the very best fine-leaved grasses that will produce a green even sward, most beautiful in its rich green color and fine texture. Best lawns will result from very early spring seeding or seeding in early fall. One pound of seed will sow 200 sq. ft. Upon large lawns 100 lbs. per acre.

**Permanent Hay and Pasture Mixture.** The right grasses—12 to 14 in number in the right proportions are used to make up this mixture. If the seed is sown carefully, under reasonably good conditions, pasturing may begin early in the summer and last until late fall. A large proportion of the grasses used are of a permanent nature, and the field, once firmly established will last for many years. Sow either Spring or Fall. 32 lbs. (1 bu.) per acre. Two mixtures are made—one for highland sowing—the other, called lowland, for lowland, meadow, etc.

Strictly high grades of Kentucky Blue Grass, Canada Blue Grass, Orchard Grass, Red Top, Meadow Fescue, English Rye Grass, Bromus Inermis, Tall Meadow Oats Grass—are offered.

**Winter or Hairy Vetch.** A most valuable plant for hay, pasture and soil improvement. Sown by itself, 50 to 60 lbs. of seed may be used per acre. It is advisable to sow about  $\frac{1}{2}$  bushel to 3 pecks of Rye with about 30 to 40 lbs. Vetch per acre. The advantage of Vetch over some other legumes is that it will thrive in most barren soils, and upbuild them at the same time. We furnish high-grade seed. Inoculate Vetch with Farmogerm (see page 15.)

**Dwarf Essex Rape.** Fine for cattle, hogs and sheep. Grows quickly—6 to 8 weeks. Sown into corn at last cultivation will make a good fall pasture. May be sown any time in spring, summer or fall. When plowed under, soil is benefited. Rape will succeed anywhere. Can be grown at such small cost for seed, that it should be more widely used. Sow 5 to 6 pounds per acre. See Price List.



The Sweet Clover Plant

## “Mammoth White” Winter Rye

“Mammoth White” Winter Rye is the most popular and widely used variety. Produces stalk of great length—gives heavy tonnage of straw—bears head of white chaff—grain of nice, dark brown kernels. Straw is stiff—stands up well. Winter Rye is very hardy—will thrive on land that will not produce wheat—may be sown away late in the Fall. Its extreme hardiness is ample insurance against any conditions of weather or climate. Rye is grown for a cover crop—green manure—to plow down for purposes of adding humus to the soil—for pasture (Spring or Fall) as well as for a grain crop. We have fine stocks, clean and sound—carefully graded, free from fowl seeds, and of highest germination. Sow  $1\frac{1}{2}$  bushels per acre for best results. See Price List.

## Inoculate with “Farmogerm” It Means Better Crops— Better Soils—Less Fertilizers

Seeds of all legumes—Clovers, Alfalfa, Beans, Peas, Vetches, etc.—will yield far better if inoculated with Farmogerm, and in addition leave in the soil a heavy deposit of nitrogen which benefits all succeeding crops. Farmers who have used Farmogerm would not be without it. The demand for it grows greater each year.

### What Farmogerm Is

Farmogerm is a pure culture, or growth of nitrogen-fixing bacteria that has been selected and bred up to transform large amounts of nitrogen from the air into soluble nitrates.

These bacteria are grown in a jelly, or food, in which they remain active for long periods of time, and sent out in a bottle which admits the necessary supply of pure air, yet keeps out destructive contaminations.

### Much Lower Prices on Farmogerm (See Below)

New scientific methods of manufacture have given lower prices. **You cannot now afford to do without Farmogerm.** Apply it liberally this year on all of your legume seeds—Clovers, Alfalfa, Soy Beans, Cowpeas, Field Peas, Vetch, Sweet Clover, Crimson Clover. **Results are going to pay!**

Farmogerm is acknowledged the highest grade, most effective, most successful inoculation. Is endorsed by farmers, Federal Agricultural Department, and State Experiment Stations.

**Farmogerm Stays Good—It’s Always Fresh—Farmogerm keeps for years.** Other inoculants get weaker each day—**Farmogerm always has its full strength.** Because of the method of sealing the bottle—a patented stopper which admits filtered air and keeps out all impurities—**Farmogerm** is just as good in five years as when first bottled. Just add water and shake the bottle and sprinkle over the seeds as directed. Your crop will benefit beyond your expectations.

**Farmogerm is Economical—**No other inoculant on the market is so strong and virile; no other inoculant will thoroughly treat as much seed. The one-acre size bottle of **Farmogerm** is sufficient for 15 pounds of clover, 20 pounds of alfalfa, 100 pounds of Canada Field Peas, 60 pounds of Vetch, etc. A different bacteria is required for each crop. **When ordering, be sure to state what crops you wish to inoculate.**

**NEW LOW PRICES:** { 1-acre size \$1.00 each, post paid  
3-acre size 2.50 each, post paid  
12-acre size 9.00 each, post paid

Full directions go with each bottle. **Farmogerm is easily applied—it takes but little time.**

### What Farmogerm Will Do

Unless the soil is very acid or wet, Farmogerm will:—

1. Increase the yield and quality of legume crops, giving quicker growth and earlier maturity.
2. Increase the food values of legumes.
3. Make legumes grow in new localities, where they cannot otherwise be grown successfully.
4. Supply nitrates to other crops growing with the inoculated legume crop.
5. Enrich the soil for future crops, thereby increasing the permanent values of the farm. **Better crops—better soil—less fertilizer—less labor.**

# "Clipper" Seed Cleaners

If you sow your own wheat or grass seed, you need a Clipper Seed Cleaner to make it "fit to sow." The cost is small, the upkeep is practically nothing. It will last a life-time and make you money every year.

The Clipper has no worthy competitor. It is used by seedmen almost exclusively. No other cleaner cleans so clean—none other sells so cheaply. The Clipper is well made, nicely finished, light running.

**The "Clipper" Screen Outfit** is very complete for the work required and contains screens for Wheat, Oats, Barley, Rye, Red and Alsike Clovers, Alfalfa, Sweet Clover, Timothy, Millet, Flax, Peas, Beans, Cow Peas, Soy Beans, grading Seed Corn, cleaning clover containing buckhorn, plantain or ripple, cleaning timothy seed containing pepper grass seed and sorrel; also Cane seed, Milo Maize, Kaffir Corn and separating corn from oats.

The **Vertical Air Blast** of the "Clipper" is a feature that no other cleaner has, and it makes possible the most difficult separations that can be made in no other way. For instance, in cleaning seed grain, if the belt is properly adjusted on the pulleys, so as to get the correct speed of the fan and if the turning is regular, you can remove the light grains from the heavy, to the extent that the weight of the grain being cleaned can be raised from three to five pounds per bushel. "Clipper" Cleaners are used by Agricultural Colleges, Experiment Stations, Seed Breeders, Seedsmen generally in the United States, Canada, Europe, Australia, South America and New Zealand, in fact, all over the world.

We give here, **Sectional View of "Clipper" Cleaners**, which is the same for No. 1-B, and No. 2-B, showing Vertical Air Shaft, Dust Hood, Grain Box, and other special features of the "Clipper" Cleaners.

**Fig. 1—Shoe**, with two receiving grooves for screens. The screens are securely held in place by a compressing rod.

**Fig. 2—Straw-Spout**, for carrying off large particles, straw, etc., etc.,

**Fig. 3—Screening Spout**, for removing sand, fine seeds, etc. It is opened by pulling out slide above spout.

**Fig. 4—Vertical Air Shaft**, through which the draft passes upward, carrying off chaff, dust, etc., through Dust Hood (see Fig. 6.) The perfect grain and seed fall and pass out at Fig. 5 into the Grain Box, which will hold 5 bushels. It has a Lifting Board at the end, which allows the contents to be easily scooped into sacks. **Our Grain Box prevents waste, makes sweeping floors unnecessary**, and also furnishes convenient storage for screens and all detachable parts of the machine, when not in use.

**Fig. 6.—Dust Hood**, through which chaff dust and worthless matter are discharged. All light, imperfect and foreign grain and seeds are discharged at opening (see Fig.7.)

**Fig. 8—Fan**, with iron arms, fitted on a turned steel shafting, equipped with Cone Pulley. This allows changing the speed of the fan, which is necessary to properly clean grain and seeds of varying weights.

**No. 1-B "Clipper"** is a farm size hand mill that will clean twenty bushels Seed Wheat per hour, or ten bushels Clover or Timothy Seed per hour. Dimensions are: length, 4 ft. 8 in.; width, 2 ft. 2 in.; height, 3 ft. 8 in.; weight, crated, 185 pounds.

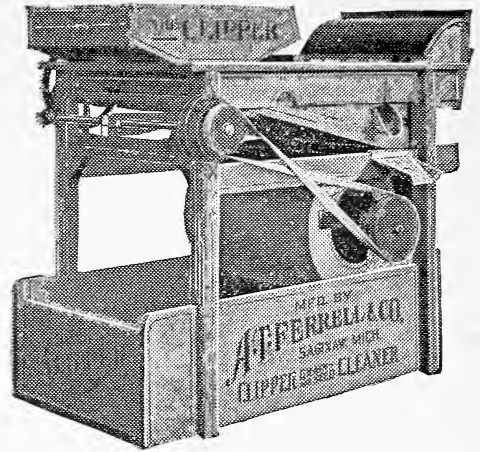
**Twelve Screens**, 19 in. wide and 22¼ in. long, go with the No. 1-B Mill, an outfit of screens suitable for cleaning Seed Wheat, rye, oats, corn, barley, peas, beans, clover, timothy seed, other grass seed, garden and vegetable seeds.

**Plain Directions for Separating** go with each mill. These are so easily understood that anyone can learn in a few minutes how to make the most delicate separations.

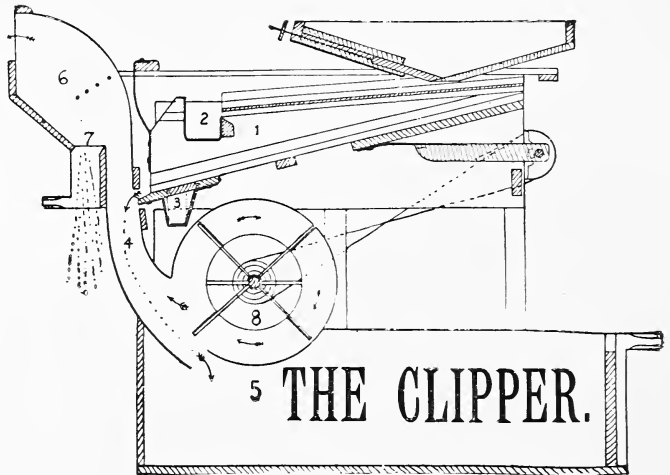
**No. 2-B Clipper** does exactly the same work as the No. 1-B. Its capacity per hour is 25 bu. grain and 15 bu. grass seed. The screens (12 in number) are 6 in. wider than the No. 1-B screens. Dimensions, of No. 2-B are 4 ft. 8 in. long, 2 ft. 8 in. wide, 3 ft. 8 in. high. Crated weight, 210 lbs. No. 2-B can be run easily by hand for cleaning grass seed, but for cleaning grain some kind of power should be applied—¼ horse is sufficient.

**Prices of No. 1-B and No. 2-B Clipper Cleaners—See Price List.**

Send orders for Clipper Cleaners to A. H. HOFFMAN, Inc., Landisville, Pa.



The No. 1-B Clipper Seed Cleaner



## OUR SERVICE IN SEED WHEAT

is to furnish good farmers—clean, graded winter seed wheat of the best varieties, grown in the best soils—at moderate prices.

There is no better source of wheat for seed purposes in the world than Lancaster County, Pennsylvania.

There is no better list of hardy, vigorous, productive varieties than this one. No seedsman anywhere is better equipped to clean and grade wheat for seed. None can handle seed wheat more economically.

Our prices are not higher—rather lower than the others charge.

Take advantage of our service—do it without delay. The early customer gets the exact variety he wants—the late one may have a limited choice—the very late one may be disappointed. We always sell out.

## TWO IMPORTANT OFFERS

**Bags are Free** and not weighed in with the seed. Most firms make you figure “extra” for bags. We don't. Keep this in mind when comparing our prices. Bags are expensive.

**We Pay the Freight** per Offers printed below. By these Bags and Freight Offers you know exactly what seed will cost, sacked and delivered. Remember this Freight Offer. Present rates are extremely high.

### Freight Paid Offer No. 1

We will pay all freight on orders of 300 pounds or over to be shipped at one time to any freight station in Pennsylvania, N. J., N. Y., Maryland, West Va., Dela., Ohio, Virginia, Conn., R. I., and Mass.

### Freight Paid Offer No. 2

If you are not in our Freight Paid Territory, and order 300 pounds or more, we will allow 30c per 100 pounds to help pay freight charges. Deduct this allowance from your remittance when ordering.

**Shipments by Express** are sent “Charges Collect.” If you order 300 lbs. or over sent by Express—we will refund you the freight charges that would have been paid by us per above Freight Paid Offers.

(When seed is to be forwarded by Parcel Post, add for Postage as per Schedule on back of enclosed Order Sheet.)

**Prices Change.** Quotations are not printed in this Catalog—values are constantly changing. A separate Price List is mailed with Catalog. If you should delay placing your order, ask us for new Price List when you are ready. Price Lists will cheerfully be mailed as often as you ask for them.

**Payments Must Accompany Orders.** Remit by Money Order, Draft, Check or Cash by Registered Mail. Don't ask us for credit—we can't do business that way. Our customers' standing remains unknown to us even though they may order year after year. **Reference:** “Dun's” or “Bradstreet's” Mercantile Agencies; The Guaranty Trust Co., Lancaster, Pa.; The First National Bank, Landisville, Pa. Any Farm Paper carrying our advertisements.

## OUR SPRING CATALOG

Issued late in January, 1923, will offer a complete line of Spring Seeds—all of the Clovers, Seed Oats of several types, Seed Corn for Silage or Husking use, Maine-grown Seed Potatoes, Soy Beans, Field Peas, etc., etc.

It will pay you to read this Book. Copy gladly furnished free.

**A. H. HOFFMAN, Inc., Landisville, Lancaster County, Pa.**

**HOFFMAN'S**  
EXTRA QUALITY  
**FARM SEEDS**

